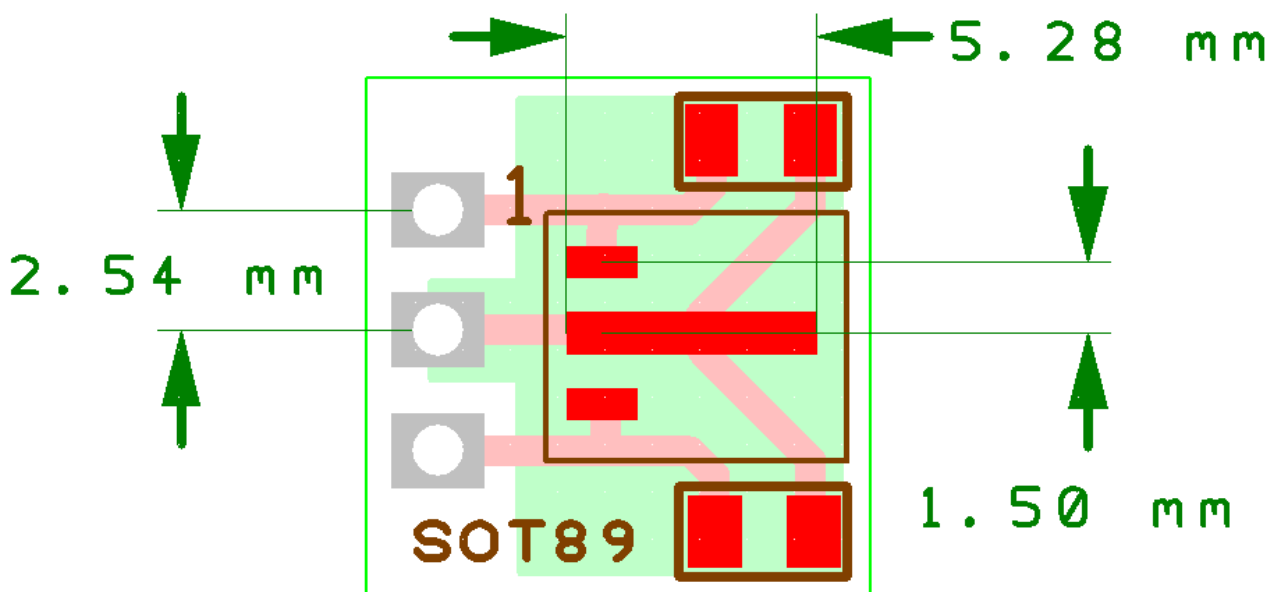
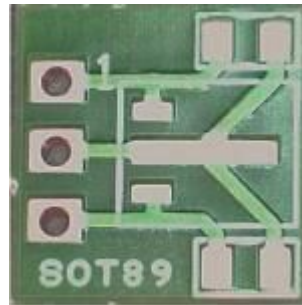


# SOT89 ADAPTER

## Breadboard adapter for SOT89 devices:

**PCB dimensions:** 12 x 11.3 x 1,5 mm



**Our reference:** 03172A

**Product description:** Breadboard adapter for SOT89 devices.  
Accept a single row connectors with 2,54 mm pitch: is breadboard compatible.

**Technology:** Plated through FR4 pcb, with solder mask to avoid shorts between pads when hand soldered, as shown in photo. All holes are plated through.  
The surface of pads in this adapter, is chemical gold plated.

**Ground connection:** connected to bottom layer.

**Decoupling capacitors:** can use two 0805 decoupling capacitors.

**PCB contour:** pcb contour is scored; is easy to break easily a block of several adapters in individual pieces.

**Hand soldering:** should be used a liquid flux, for easy soldering to the gold surface.

**Handling:** is important before soldering, to avoid fingerprints over the gold plated surface of the pads.

### Links:

[http://www.diodes.com/zetex/\\_pdfs/3.0/pack/SOT89.pdf](http://www.diodes.com/zetex/_pdfs/3.0/pack/SOT89.pdf)

<http://www.fairchildsemi.com/dwg/MA/MA03C.pdf>

[http://www.nxp.com/documents/outline\\_drawing/sot089\\_po.pdf](http://www.nxp.com/documents/outline_drawing/sot089_po.pdf)

[http://www.analog.com/static/imported-files/packages/PKG\\_PDF/SOT-89\(RK\)/RK\\_3.pdf](http://www.analog.com/static/imported-files/packages/PKG_PDF/SOT-89(RK)/RK_3.pdf)

[http://www.supertex.com/pdf/package/N8\\_03\\_TO243AAx.pdf](http://www.supertex.com/pdf/package/N8_03_TO243AAx.pdf)

<http://diodes.com/datasheets/ap02001.pdf>

Please visit our site for updates and new types:

<http://www.breadboard-adapters.com/>

To any questions or feedback please email:

[sales@breadboard-adapters.com](mailto:sales@breadboard-adapters.com)