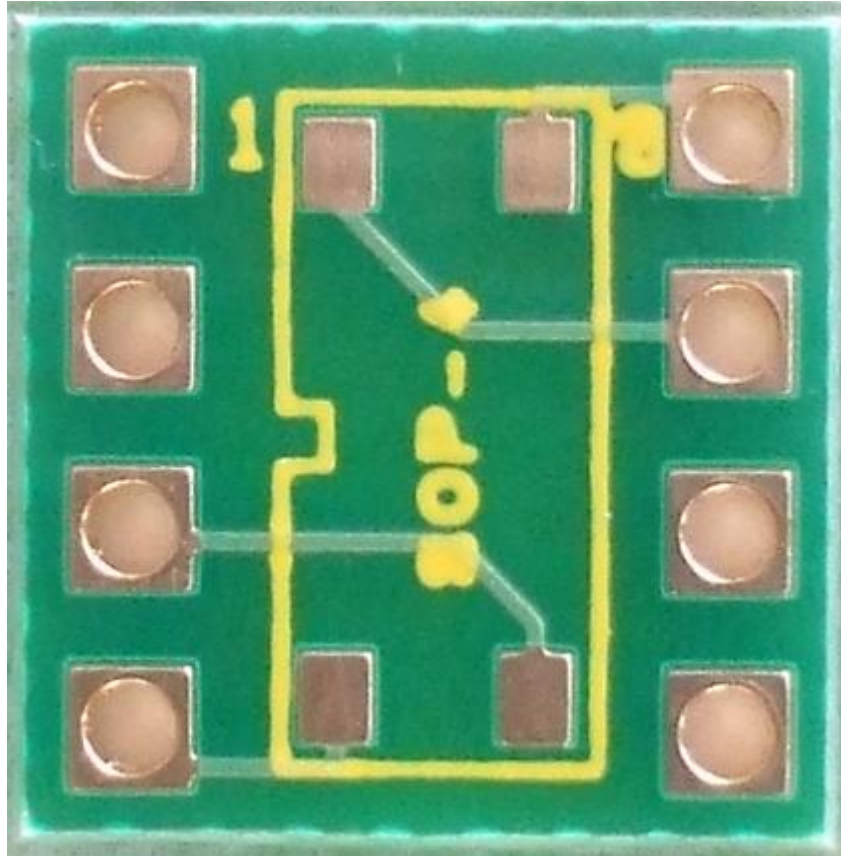


ADAPTER for SOP-4 devices

PCB dimensions: 10.7 x 10.7 x 1,5 mm



Product description: Breadboard adapter for SOP-4 devices
Accept row connectors with 2,54 mm pitch: is breadboard compatible.

Technology: Plated through FR4 pcb, with solder mask to avoid shorts between pads when hand soldered, as shown in photo. All holes are plated through. The surface of pads in this adapter, is chemical gold plated.

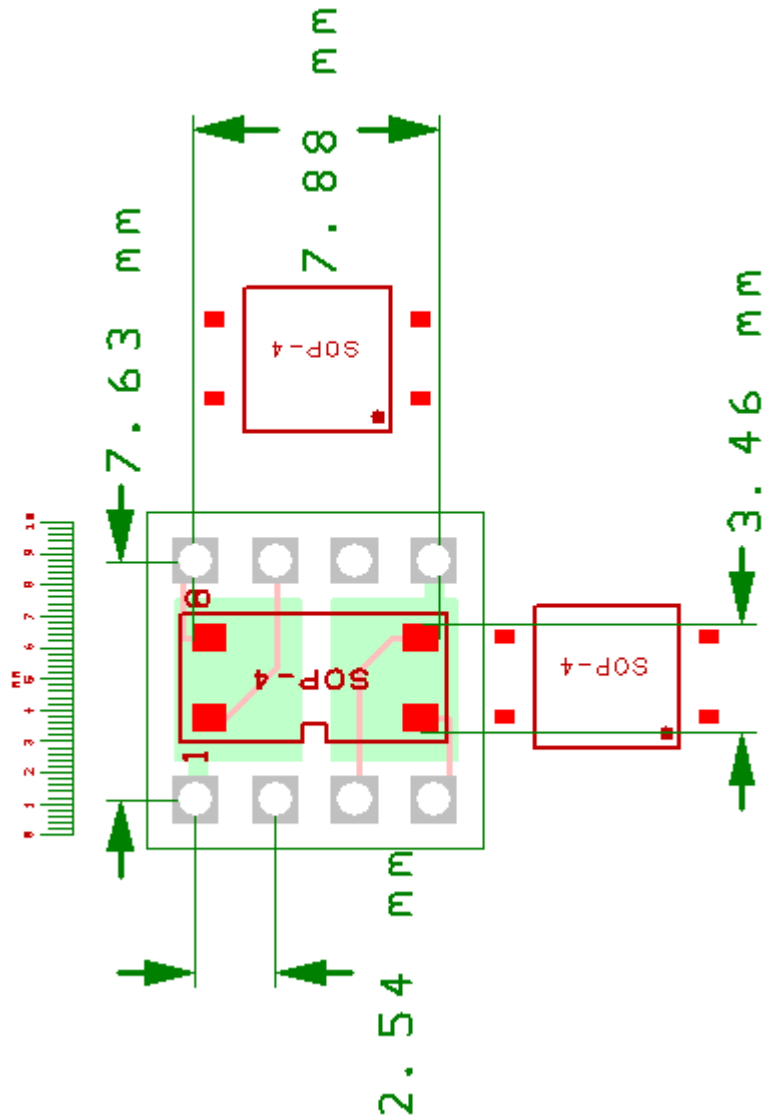
Ground plane: one ground plane connection is available. The ground plane is also useful also as a small heatsink.

PCB contour is scored: if several units are supplied, is easy to break in individual adapters.

Hand soldering: should be applied a liquid flux, for best soldering to the gold surface.

Handling: is important before soldering, to avoid fingerprints over the gold plated surface of the pads.

Dimensions of our adapter :



Links for SOP-4 package

<http://www.semicon.toshiba.co.jp/eng/product/package/coupler/sop4.html>
<http://www.vishay.com/docs/83686/sfh690ab.pdf>

Basic information:

<http://www.polyonics.com/PubDocs/SMT%20Dictionary.pdf>

Links for SMD soldering:

http://www.4shared.com/document/Ma1BZxT7/Low_Cost_SMD_Soldering_Guide.html
http://www.4shared.com/get/oyPNr6_C/smd_soldering.html

Please visit our site for updates and new adapter types:

<http://www.breadboard-adapters.com/>

To any questions or feedback please email:

sales@breadboard-adapters.com