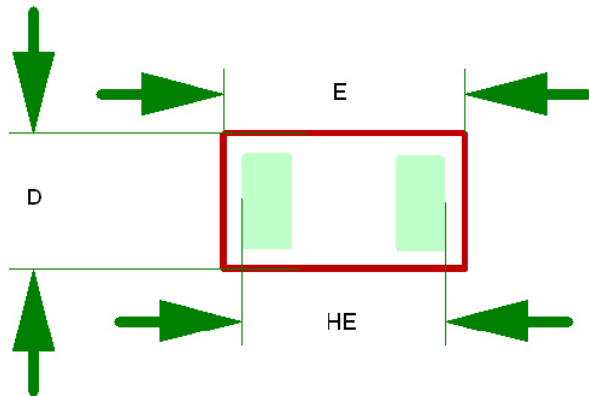


SOD882 ADAPTER BOARD FOR PROTOTYPING

1. Package SOD882 dimensions



SOD882 (NXP)

HE	0,87	0,95
E	0,95	1,02
D	0,55	0,62

SOD882 (ST)

HE	0,85	0,95
E	0,95	1,05
D	0,55	0,65

2. Links

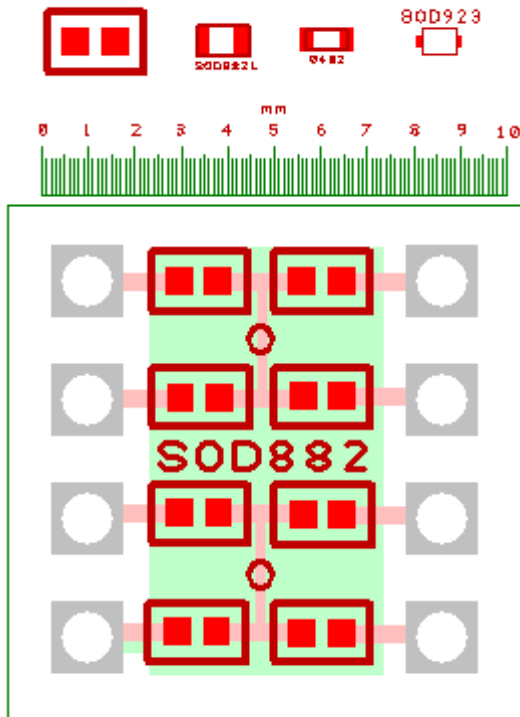
http://www.nxp.com/documents/outline_drawing/sod882_po.pdf

3. Our PCB

Pitch Spacing:	2.54mm
Distance between connectors	7,61 mm
Board Material:	FR4 Epoxy Fibreglass
Hole Diameter:	0,95 mm
Board Height:	11mm
Board Width:	11mm
Board Thickness:	1.5mm
Copper Coating :	chem. Niquel Gold
Copper Thickness:	35µm
No. of Copper Sides:	2
Solder mask	yes
ROHS	Conform

CAD view : Simulation of:

- SOD882 / SOD923 / 0402 package
- the pcb adapter in the same scale.



This adapter accepts 8 units. The interconnections can be easily cut with a XACTO. The SOD923 and 0402 packages can be used with this adapter. A drop of solder can make a shunt if necessary.

[OUR SITE](#)

[OUR E-SHOP](#)

www.breadboard-adapters.com