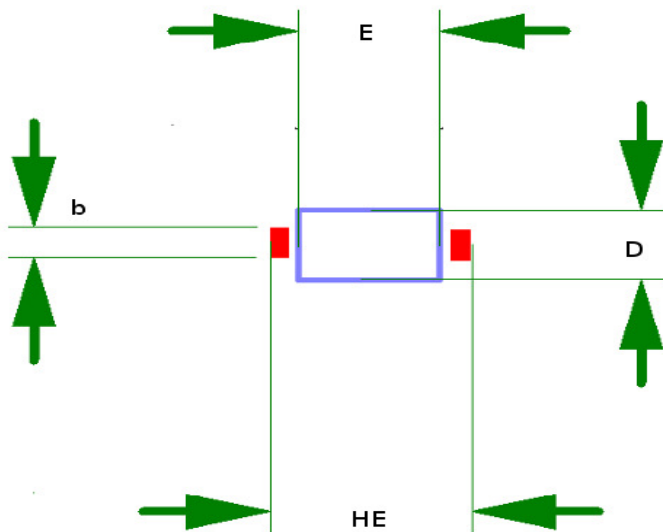


SOD 523 / SOD723 ADAPTER

1. Package SOD523 dimensions



SOD523 (NXP)

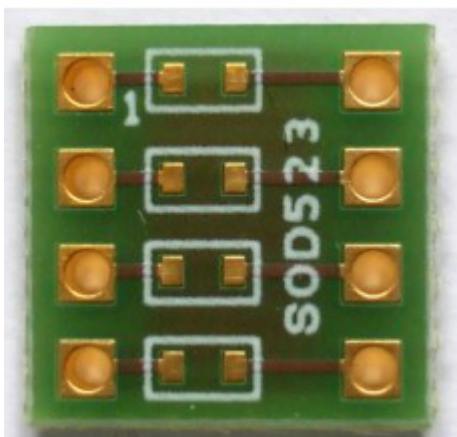
HE	1,55	1,65
E	0,75	0,85
D	1,15	1,25
b	0,25	0,34

SOD523 (VISHAY)

HE	1,50	1,70
E	1,10	1,30
D	0,70	0,90
b	0,18	0,35

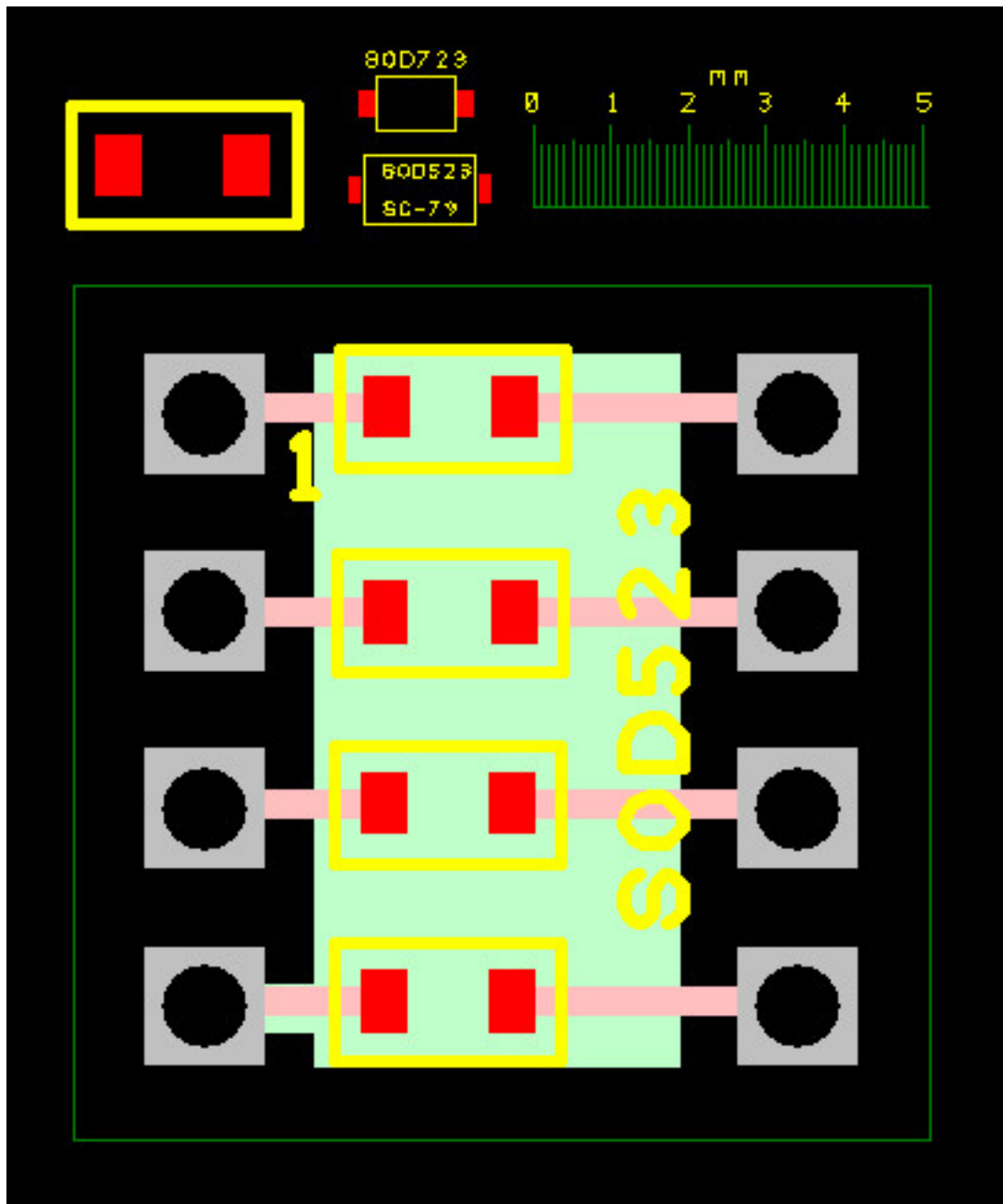
2. Our SOD523 / SOD723 adapter

Pitch Spacing:	2.54mm
Distance between connectors	7,61 mm
Board Material:	FR4 Epoxy Fibreglass
Hole Diameter:	0,95 mm
Board Height:	11mm
Board Width:	11mm
Board Thickness:	1.5mm
Copper Coating :	chem. Niquel Gold
Copper Thickness:	35µm
No. of Copper Sides:	2
Solder mask	yes
ROHS	Conform



This adapter accepts 4 independent units

CAD view : Simulation of a SOD523 package and the adapter in the same scale.



[OUR SITE](#)

[OUR E-SHOP](#)

www.breadboard-adapters.com