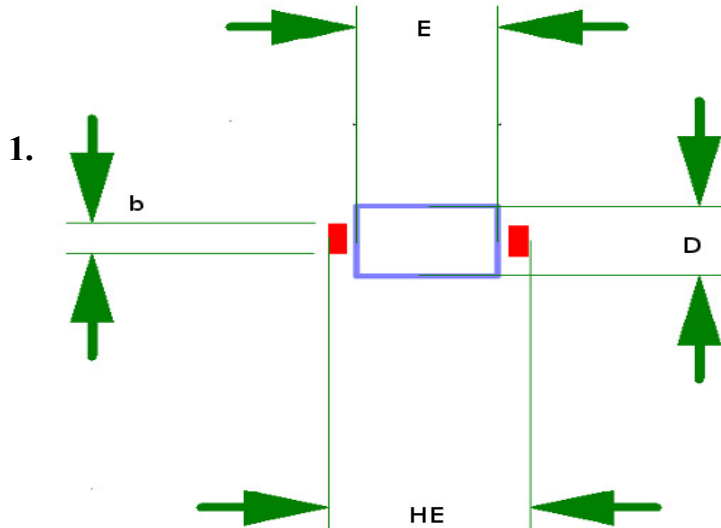


# SMA / DO214-AC ADAPTER

Adapter board for prototyping circuits with SMA , SMB, SOD123, SOD123F, 1206, Minimelf, Quadromelf and SOD80



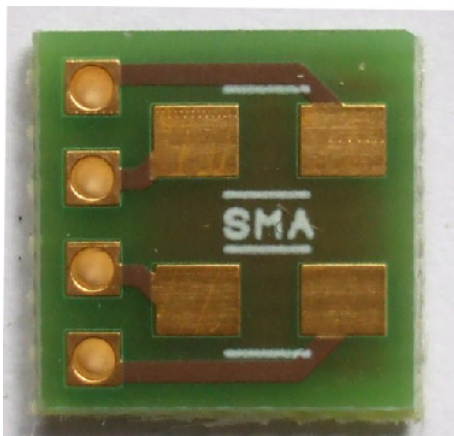
Package SMA dimensions \*

| SMA (Central Semi) |      |      |
|--------------------|------|------|
| HE                 | 4,78 | 5,59 |
| E                  | 3,99 | 4,60 |
| D                  | 2,29 | 2,92 |
| b                  | 1,27 | 1,78 |

| SMA (VISHAY) |      |      |
|--------------|------|------|
| HE           | 4,80 | 5,28 |
| E            | 4,00 | 4,60 |
| D            | 2,50 | 2,90 |
| b            | 1,40 | 1,60 |

## 2. Our SMA / DO-214AC adapter

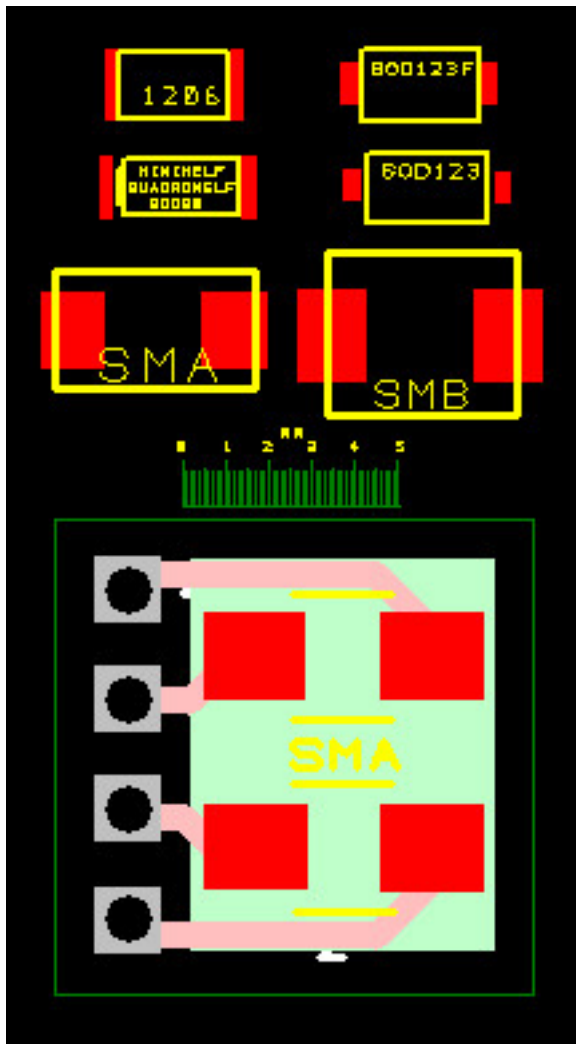
|                             |                      |
|-----------------------------|----------------------|
| <b>Pitch Spacing:</b>       | 2.54mm               |
| <b>Board Material:</b>      | FR4 Epoxy Fibreglass |
| <b>Hole Diameter:</b>       | 0,95 mm              |
| <b>Board Height:</b>        | 11mm                 |
| <b>Board Width:</b>         | 11mm                 |
| <b>Board Thickness:</b>     | 1.5mm                |
| <b>Copper Coating :</b>     | chem. Niquel Gold    |
| <b>Copper Thickness:</b>    | 35µm                 |
| <b>No. of Copper Sides:</b> | 2                    |
| <b>Solder mask</b>          | yes                  |
| <b>ROHS</b>                 | Conform              |



Our adapter can be used for two of the following packages :

1206  
Minimelf  
Quadromelf  
SOD80  
SOD123  
SOD123F  
SMB

CAD view : Simulation of a SMA package and the adapter in the same scale.



\* Data collected from the websites of the manufacturers

**OUR SITE**

**OUR E-SHOP**

[www.breadboard-adapters.com](http://www.breadboard-adapters.com)