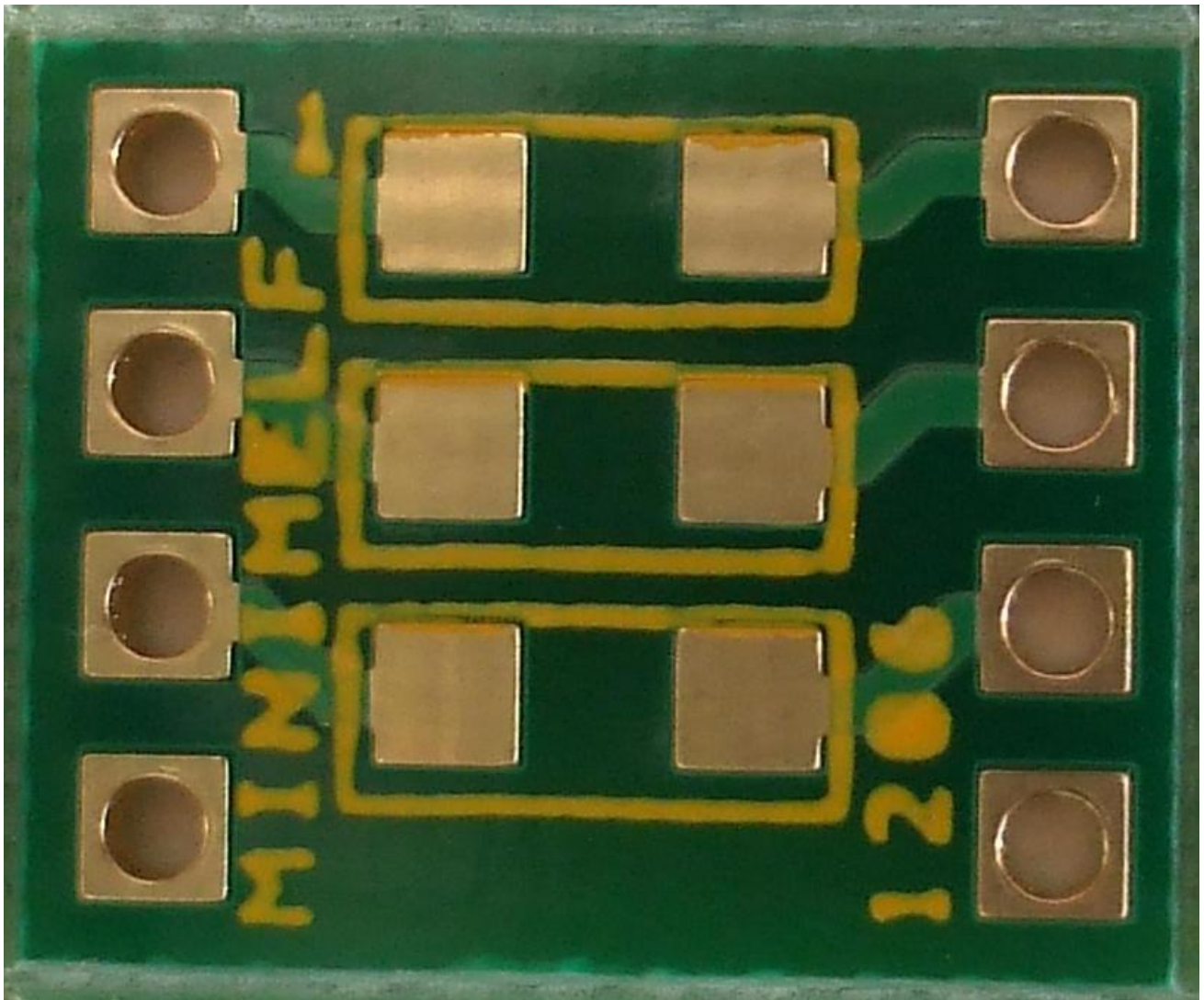
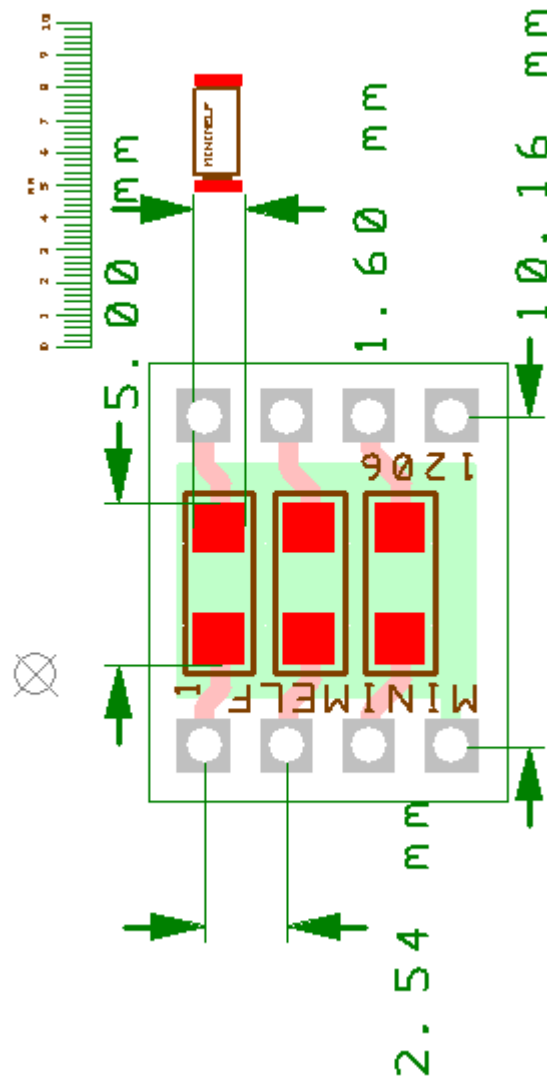


MINIMELF / SOD80C / 1206 ADAPTER

Breadboard adapter for 3 units of MINIMELF / SOD80C / 1206





Our reference: 02072A

PCB dimensions: 13.5 X 11.1 x 1,5 mm

Product description: Breadboard adapter for MINIMELF / SOD80C or 1206 devices , for example for diodes, zeners and TVS diodes. This adapter accepts 3 MINIMELF / SOD80C or 1206 devices.

Technology: Plated through FR4 pcb, with solder mask to avoid shorts between pads when hand soldered. All holes are plated through.

The surface of pads in this adapter, is chemical gold plated.

PCB contour: The pcb contour is scored.

Hand soldering: should be used a liquid flux, for easy soldering the gold surface.

Handling: is important to avoid fingerprints over the gold plated surface of the pads, before soldering.

Links for MINIMELF:

<http://www.diodes.com/datasheets/ap02002.pdf>

<http://www.vishay.com/docs/84013/minimelf.pdf>

http://www.fagorelectronica.es/semi/pdf/formatos/Rectificadores_Zener_TV5/minimelf.pdf

http://diotec.com/service/files/news031_minimelfline.pdf

Links for SOD80C:

http://www.nxp.com/documents/outline_drawing/sod080c_po.pdf

<http://www.fairchildsemi.com/dwg/SO/SOD80A.pdf>

Links for 1206:

<http://www.etgtech.com/pdf/oldspecs/ETG-1206.pdf>

http://www.dialight.com/Assets%5CBrochures_And_Catalogs%5CIndication%5CMDEI5981206WC.pdf

http://www.avagotech.com/pages/en/leds/surface_top_mount_mono_color_chipleds/1206_3.2_x_1.6mm_packages/

<http://www.panasonic.com/industrial/components/pdf/AOA0000CE1.pdf>

Usefull links

http://www.diodes.com/pdfs/Ap02014_R1_Soldering.pdf

[Link : tips to mount the connector](#)

Please visit our site for updates and new types:

<http://www.breadboard-adapters.com/>

To any questions or feedback please email:

sales@breadboard-adapters.com