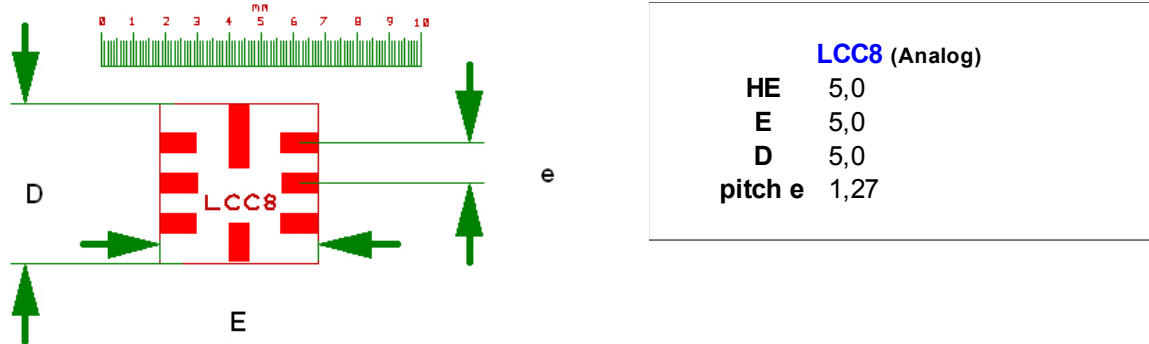


LCC8 5 x 5 mm ADAPTER BOARD

Adapter board for testing prototypes with devices with LCC8 / LCC-8 package.
Pads are gold plated. Have a bottom copper layer working as ground for lower noise.
Built with solder mask for easy soldering without solder bridges.

1. Package LCC8 5 x 5mm dimensions

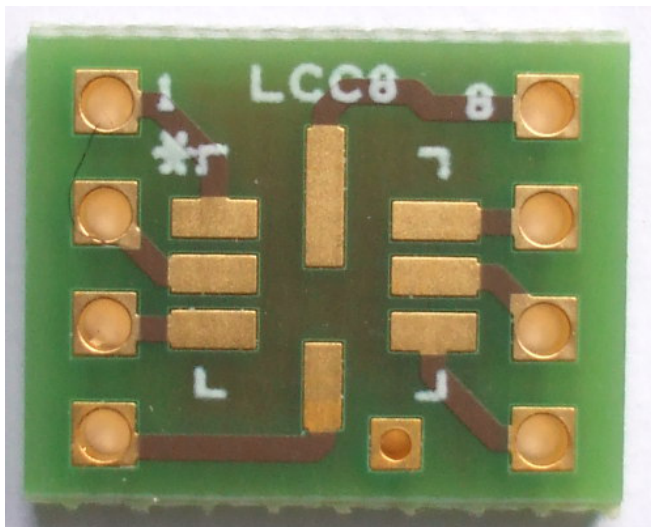


2. Links

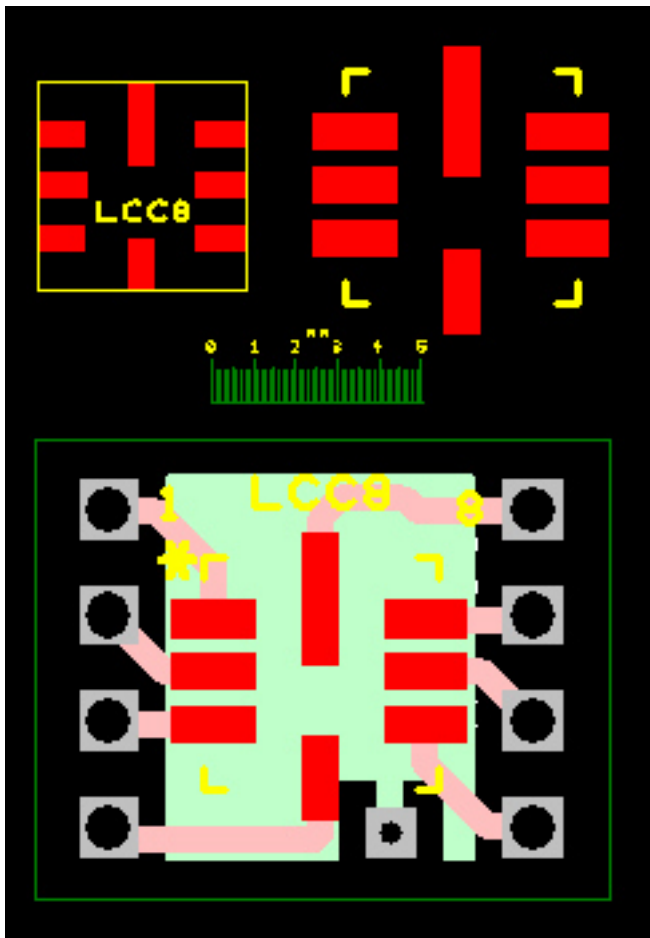
http://www.analog.com/static/imported-files/application_notes/4326543067473486309AN652_0.pdf

3. Our PCB

Pitch Spacing:	2.54mm
Distance between connectors	7,61 mm
Board Material:	FR4 Epoxy Fibreglass
Hole Diameter:	0,95 mm
Board Height:	11mm
Board Width:	11mm
Board Thickness:	1.5mm
Copper Coating :	chem. Niquel Gold
Copper Thickness:	35µm
No. of Copper Sides:	2
Solder mask	yes
ROHS	Conform



CAD view : Simulation of a LCC8 package and adapter.



This adapter have a ground connection connected to bottom copper layer

[OUR SITE](#)

[OUR E-SHOP](#)

www.breadboard-adapters.com